

Select Layers:

- Address Ranges
- Congressional
- County Boundary
- Fire Departments
- Fire Response Areas
- Flood Plain
- Garbage Collection
- House
- House (proposed)
- Justice Court
- Library
- Local Roads

Left click to view feature attributes.
Hold down the left mouse button and drag to move the map.
Use the mouse wheel or double click to zoom in.

- Sections
- Senate
- Senate (proposed)
- Structures
- Subdivisions
- Township Range
- Zip Codes
- Zoning
- Supervisor Districts

Move slider to change layer opacity:



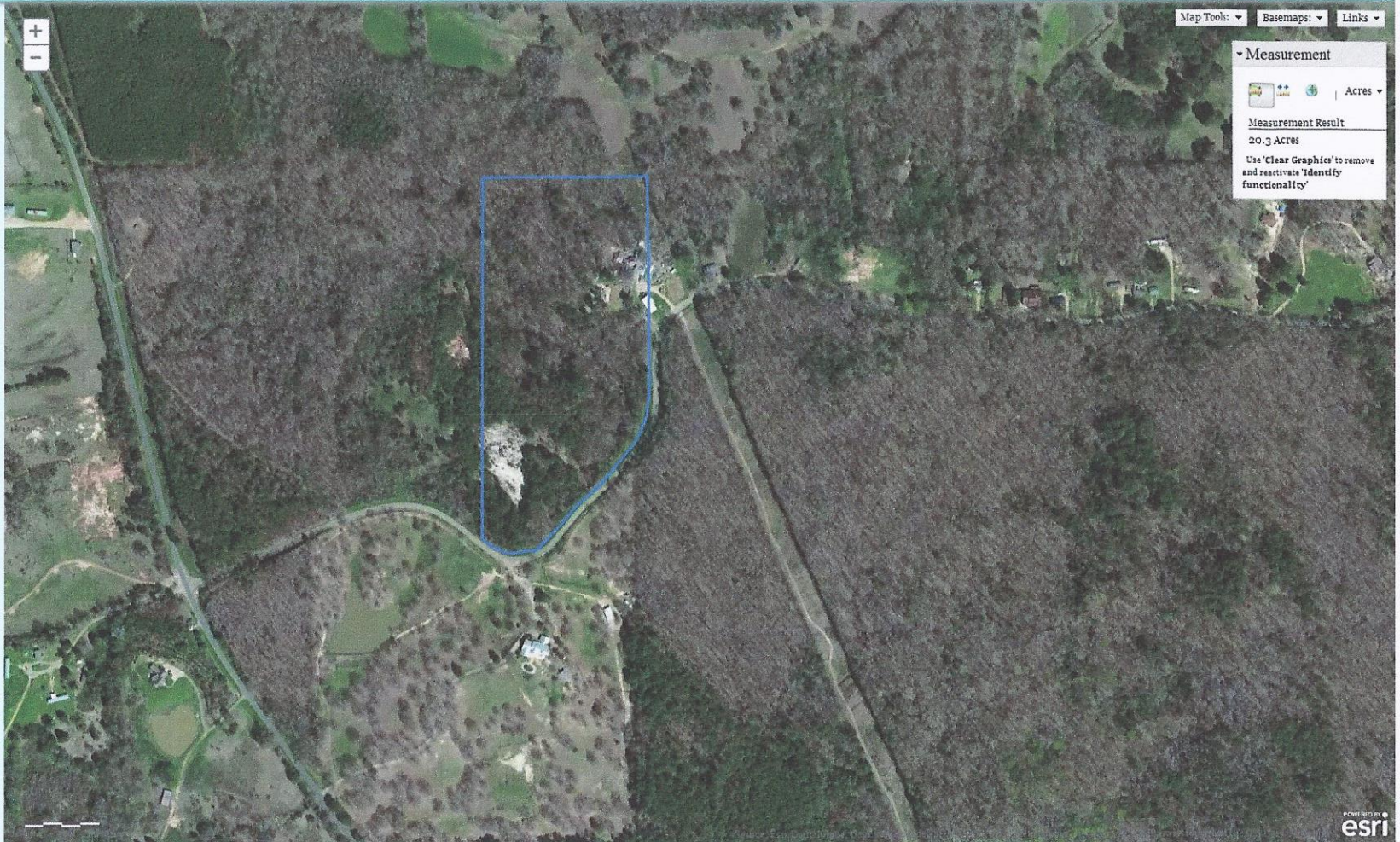
Madison County Owned Property



Select Layers:

- Address Ranges
- Congressional
- County Boundary
- Fire Departments
- Fire Response Areas
- Flood Plain
- Garbage Collection
- House
- House (proposed)
- Justice Court
- Library
- Local Roads
- Municipal Limits
- Parcels [2013]
- Parks
- Polling Locations
- Precincts
- PRVWSD
- Schools
- School Districts
- Sections
- Senate
- Senate (proposed)
- Structures
- Subdivisions
- Township Range
- Zip Codes
- Zoning
- Supervisor Districts

Move slider to change layer opacity:



Map Tools: Basemap: Links

Measurement

Acres

Measurement Result

20.3 Acres

Use 'Clear Graphics' to remove and reactivate 'Identify' functionality